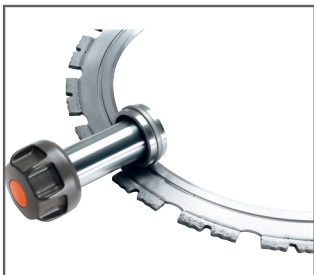




## Husqvarna K 3600 MK II

*The Husqvarna K 3600 is a cutter with performance and features that make it unique. The eccentric drive of the blade means the cutting depth is a huge 260 mm. Its unique power/weight ratio and its hydraulic drive make for a highly efficient and manoeuvrable handheld cutter. It is well suited to a wide range of applications, including both brick and reinforced concrete. The combination of large cutting depth and high capacity without set-up time make the K 3600 one of the most productive tools in the business.*



### CUTTING RING

The cutting ring on the K 3600 is fixed and supported by four roller bearings at the periphery of the blade. Two of these are guide runners that run in the slot on the side of the ring, pressing it forward and into a drive wheel, which gives better control and longer service life.



### CUTTING DEPTH

With the peripheral drive, the cutting depth is not limited by a blade spindle, and you can cut far deeper than with a traditional cutter with a centre-driven blade. The cutting depth of 260 mm (10") is sufficient to cut through a normal wall from one side.



### LIGHT CUTTER WITH HIGH POWER

Hydraulics is an excellent way to transfer high power without the actual cutter becoming heavy.



### GOOD WORKING CONDITIONS

Running a hydraulic cutter means you avoid fumes and high noise levels, so they are ideal for both in- and outdoor jobs.

## Features Husqvarna K 3600 MK II

- Hydraulic gear motor
- Peripheral drive
- Adjustable front handle
- Automatic start for water flow
- The machine's unique power-to-weight ratio and hydraulic drive make for a very efficient and easily manoeuvrable handheld cutter.
- A 260 mm cutting depth with a 350 mm blade, thanks to the unique eccentric drive.
- Stable support rollers for easy adjustment and blade change.
- Sealed drive and roller system.
- Adjustable front handle and convenient, integrated water adjustment makes operation easier and more efficient.
- Large lower spray guard and integrated support foot.
- Low weight and ergonomic design.
- Simple service and cleaning.

TECHNICAL SPECIFICATION	
Power output	4.3 kW / 5.8 hp(l)
Hydraulic flow, max	40 l/min / 10 gal/min
Hydraulic pressure	140 bar
Max cutting depth	260 mm / 10 inch
Blade diameter	350 mm / 14 inch
Weight (excl. cutting equipment)	8.3 kg / 17.4 lbs
Vibrations front handle	4.3 m/s <sup>2</sup>
Vibrations rear handle	6 m/s <sup>2</sup>
Sound power level, guaranteed (LWA)	111 dB(A)