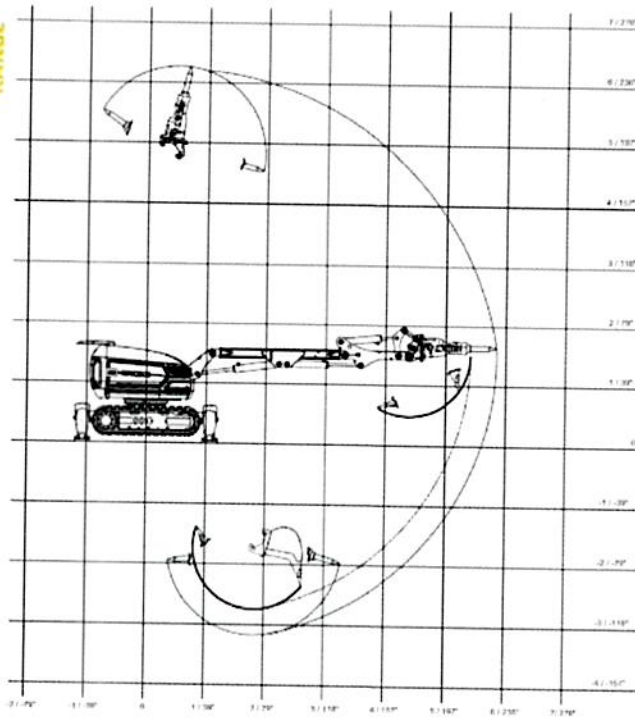
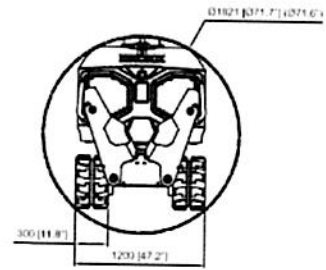
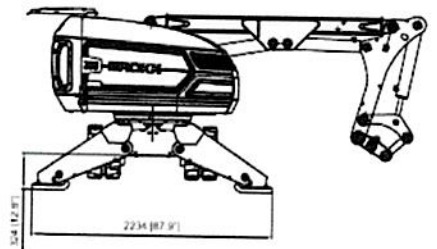
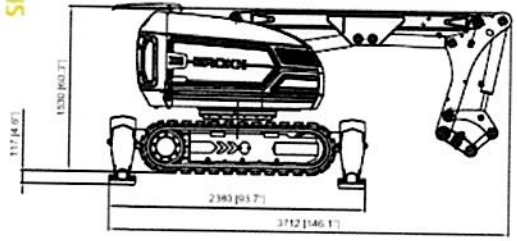


RANGE



SIZE



TECHNICAL DATA

Hydraulic breaker in illustrations SB 302
 Load and stability diagram can be ordered from Brokk AB

Performance

Slewing speed 18 sec/360°
 Transport speed, max. 2,7 km/h; 0,75 m/s; 1.7 mph
 Incline angle, max. 30°

Hydraulic system

Hydraulic system capacity 90 l; 23.8 US gal
 Pump type Variable load-sensing piston pump
 System pressure to cylinders, attachment and motors, max. 17,0 MPa; 2 466 psi
 System pressure, increased to attachment, max 20,0 MPa; 2 901 psi
 Pump flow max 50 Hz 100 l/min; 26.5 US gal/min
 60 Hz 120 l/min; 31.7 US gal/min

Electric motor

Type ABB
 Motor rating* 22 kW
 Rated current* 41 A
 Power consumption* 0.27 kW
 Starting device Soft start/Direct start

Control system

Control type Portable control box
 Signal code Digital
 Transfer Cable/Radio

Weight

Weight of basic machine excl attachment & extra equipment 3050 kg; 6724 lbs
 Recommended attachment weight 420 kg; 924 lbs

Noise level

Sound power level Lwa, measured according to directive 2000/14/EC 93 dB(A)

*Valid for 400V/50Hz

ACCESSORIES/OPTIONS

- Arm System**
Impact and heat protection for cylinder C2 and C3
- Under carriage**
Rubber caterpillar tracks
Steel caterpillar tracks
- Heat resistance**
Heat resistant hoses for hydraulic breaker
Forced draft cooling of machine
Forced draft cooling of breaker
Steel pads for kiln demolition or furnace
- Other options**
Air flushing through breaker to protect from dust
Water spray through breaker to bind dust
Counter weight
Cable reel with 63 m cable
Brokk cover
Extra hydraulic function
Drainage hose
CAN cable connection for tools

TOOLS

